



KESLA 202T-204T LOADERS



YOUR RESPONSIBLE PARTNER



YOUR RESPONSIBLE PARTNER

Kesla is an expert in modern tractor equipment. With our decades of true hands-on experience in creating innovative solutions for tractors, we offer the best and most user-friendly tools for working anywhere from forests to farms and beyond. Never compromising on responsibility.

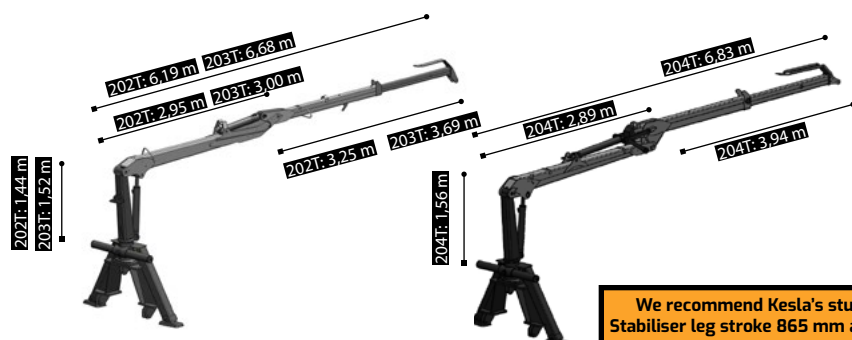
KESLA 202T-204T

KESLA 200 series loaders are suited to versatile use from farm work to contracting. The benefits provided by the youngest members of the family, the 202T and 203T models, include the convenient transport position and a set of excavation gear. The oldest sibling, the 204T loader, is akin to forwarder cranes in its boom geometry and provides agility in timber processing thanks to its wide-angle joint.



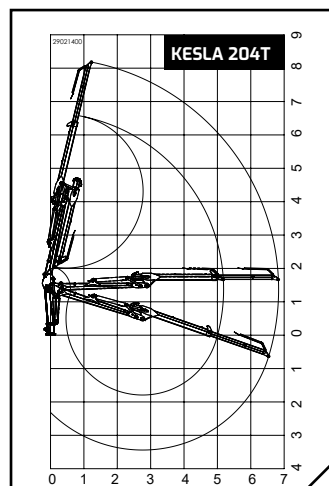
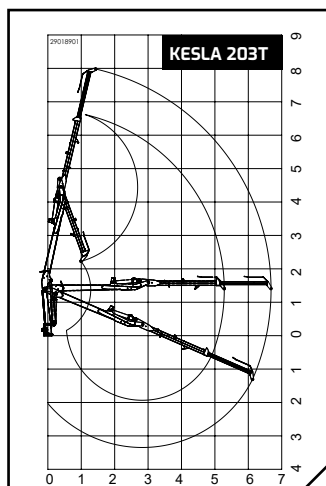
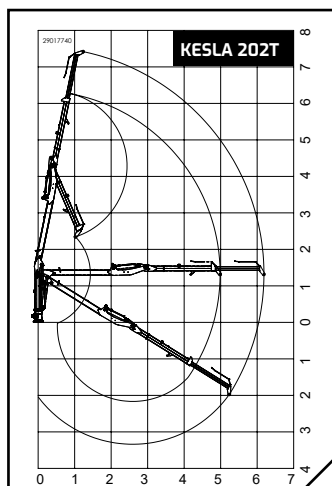
TECHNICAL SPECIFICATIONS	202T	203T	204T
Outreach	6,15 m	6,70 m	6,80 m
Boom extension	1,20 m	1,40 m	1,65 m
Lifting torque (gross, 4 m)	24,6 kNm	36,5 kNm	42 kNm
Lifting capacity at 4 metres*	425 kg	690 kg	795 kg
Lifting capacity at max. outreach*	275 kg	405 kg	410 kg
Recommended oil flow**, fixed	30-50 l/min	30-50 l/min	30-60 l/min
Requisite pressure	175 bar	175 bar	190 bar
Weight***	570 kg	620 kg	690 kg
Trailer recommendation	KESLA 104, 114 and 124 series trailers		

*Lifting capacity without a grip and rotator. The lifting capacity depends on the height and reach of the booms. ** The recommended oil flow depends on the valve selection. *** The weight of booms.



We recommend Kesla's sturdy A stabiliser legs. Stabiliser leg stroke 865 mm and width almost 2.8 m.

LOADER MOVEMENT



ACCESSORIES

- The excellent accessory options include valve and control options, working lights, a winch, excavation gear and various grapple accessories.



USABILITY

- Versatile control options.
- Rotation range 380 or 420 degrees.
- Requires little space in transport (202-203T).
- Wide-angle joint between the booms (204T).
- Extremely robust A stabiliser legs.



EFFICIENCY

- Outreach of almost seven metres.
- Modern pilot control ensures impeccable accuracy and handling.
- Excellent lifting capacity.
- Strong cast slewing device



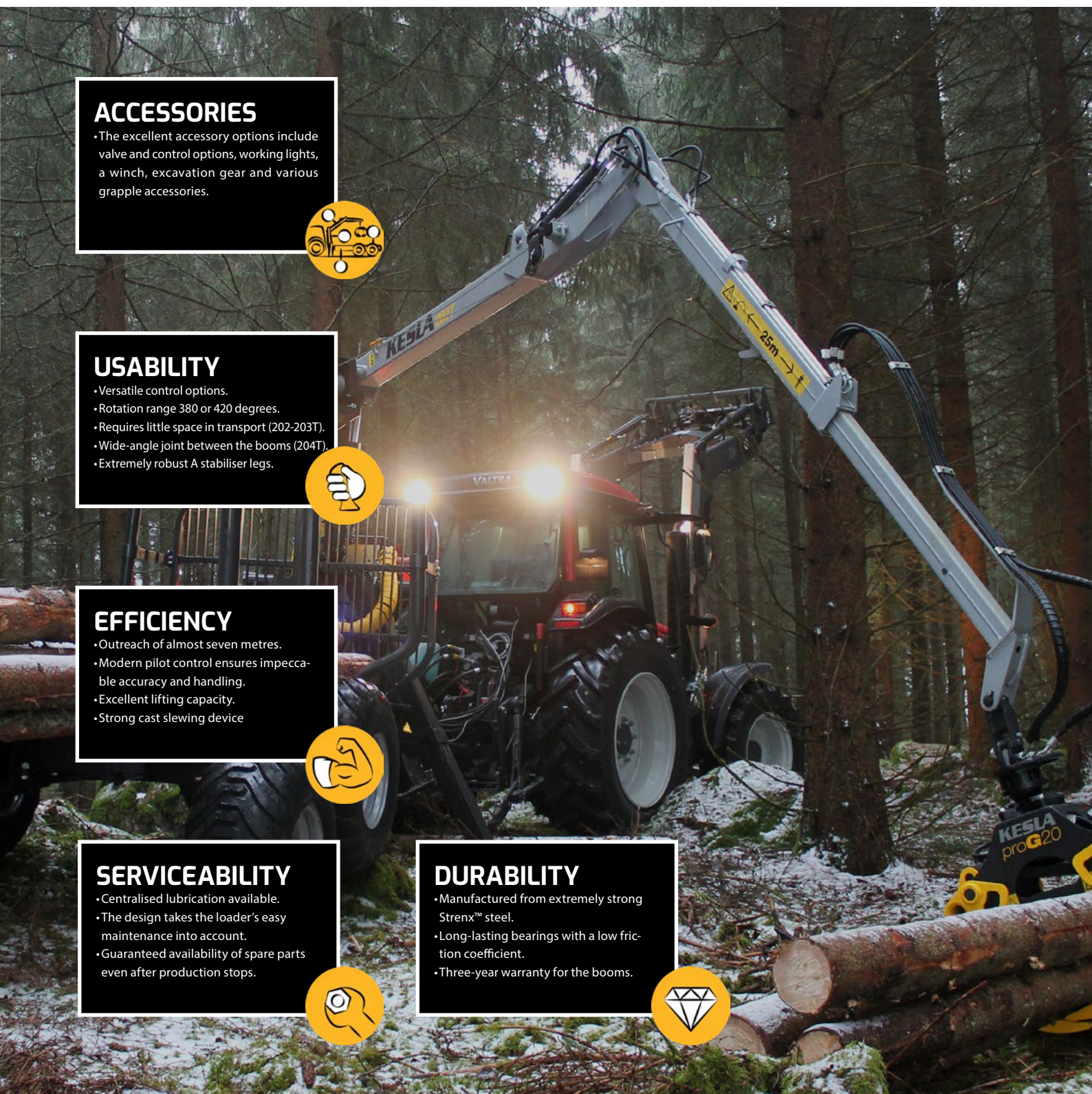
SERVICEABILITY

- Centralised lubrication available.
- The design takes the loader's easy maintenance into account.
- Guaranteed availability of spare parts even after production stops.



DURABILITY

- Manufactured from extremely strong Strenx™ steel.
- Long-lasting bearings with a low friction coefficient.
- Three-year warranty for the booms.



ELECTRIC PILOT CONTROL

The electric pilot control ensures that the controls match your needs. You can adjust the loader's movement speeds to your liking. The movements are always light and precise. The electric pilot control can be connected to the KESLA proC control system either upon order or later on.



HANDY WINCH

The winch can be used to drag logs closer even in challenging terrain. It has a reach of 40 metres and is available with a pulling force of 1,400 kg. Radio control increases safety.



KESLA 19GX

The multi-function grapple is perfect for harvesting and loading energy wood. Thanks to the integrated TILT function, the tree does not fall until the operator decides it should. The blade of the felling head can be disabled when the grip is needed for loading.



The pictured products may include optional accessories. We reserve the right to make technical changes.

YOUR RESPONSIBLE PARTNER

READ ABOUT OUR OTHER PRODUCT GROUPS:

**City cranes – Truck and industrial cranes – Forest machine cranes – Harvester heads
- Chippers - Tractor loaders – Tractor forest trailers**