



KESLA 314 & 305
LOADERS



YOUR RESPONSIBLE
PARTNER



YOUR RESPONSIBLE PARTNER

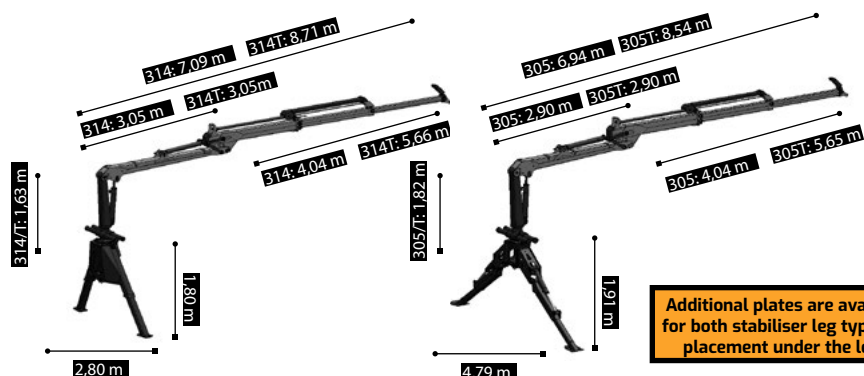
Kesla is an expert in modern tractor equipment. With our decades of true hands-on experience in creating innovative solutions for tractors, we offer the best and most user-friendly tools for working anywhere from forests to farms and beyond. Never compromising on responsibility.

KESLA 314 & 305

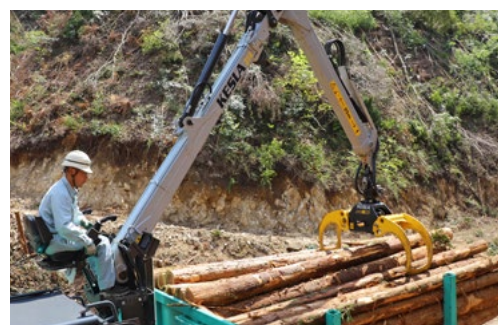
The KESLA 300-series loaders offer a good outreach, power and durability for highly demanding work. The strong stabiliser leg options provide good balance, and the professional loader geometry with a wide-angle joint increases work efficiency.

TECHNICAL SPECIFICATIONS	314	314T	305	305T
Outreach	7,10 m	8,70 m	6,90 m	8,50 m
Boom extension	1,80 m	2 x 1,70 m	1,80 m	2 x 1,70 m
Lifting torque (gross, 4 m)	59 kNm	59 kNm	65 kNm	65 kNm
Lifting capacity at 4 metres*	1 165 kg	1 065 kg	1 290 kg	1 150 kg
Lifting capacity at maximum outreach*	620 kg	440 kg	720 kg	490 kg
Recommended oil flow**, fixed	40-70 l/min	40-70 l/min	50-80 l/min	50-80 l/min
Recommended oil flow** LS	100-130 l/min	100-130 l/min	110-140 l/min	110-140 l/min
Requisite pressure	190 bar	190 bar	190 bar	190 bar
Weight***	850 kg	950 kg	1 080 kg	1 190 kg
Trailer recommendation	KESLA 114, 124 and 144 series			

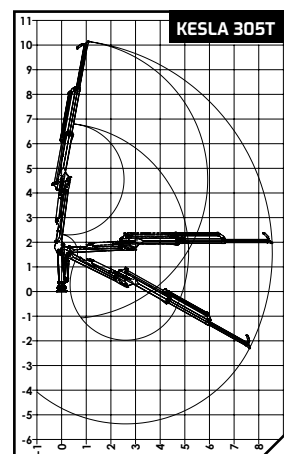
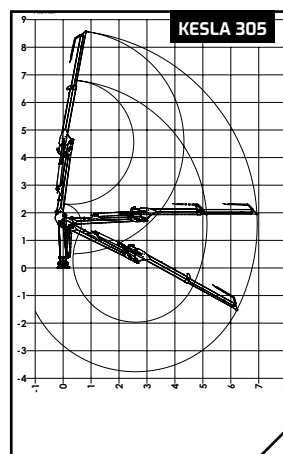
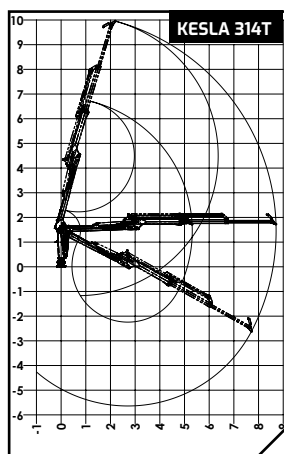
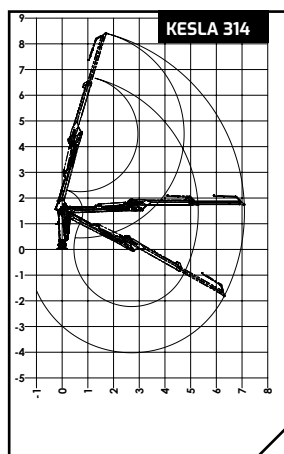
*Lifting capacity without a grapple and rotator. The lifting capacity depends on the height and reach of the booms. ** The recommended oil flow depends on the valve selection. *** The weight of booms.



Additional plates are available for both stabiliser leg types for placement under the legs.



LOADER MOVEMENT



ACCESSORIES

- The best valve options on the market and Kesla's own KESLA proC control system.
- Mountable on trailers, tractors, industrial and other base machines.
- Can be equipped e.g. for harvester operation.



USABILITY

- An agile boom geometry for crane operation even in confined spaces.
- Cylinders with function-specific optimisation.
- Customised, crane-specific valve options.
- Can be equipped even for demanding applications.



POWER

- The lowest pressure demand on the market.
- A durable but lightweight boom structure.
- A robust, model-specific crane slewing system.
- Spacious hydraulics and hoses.



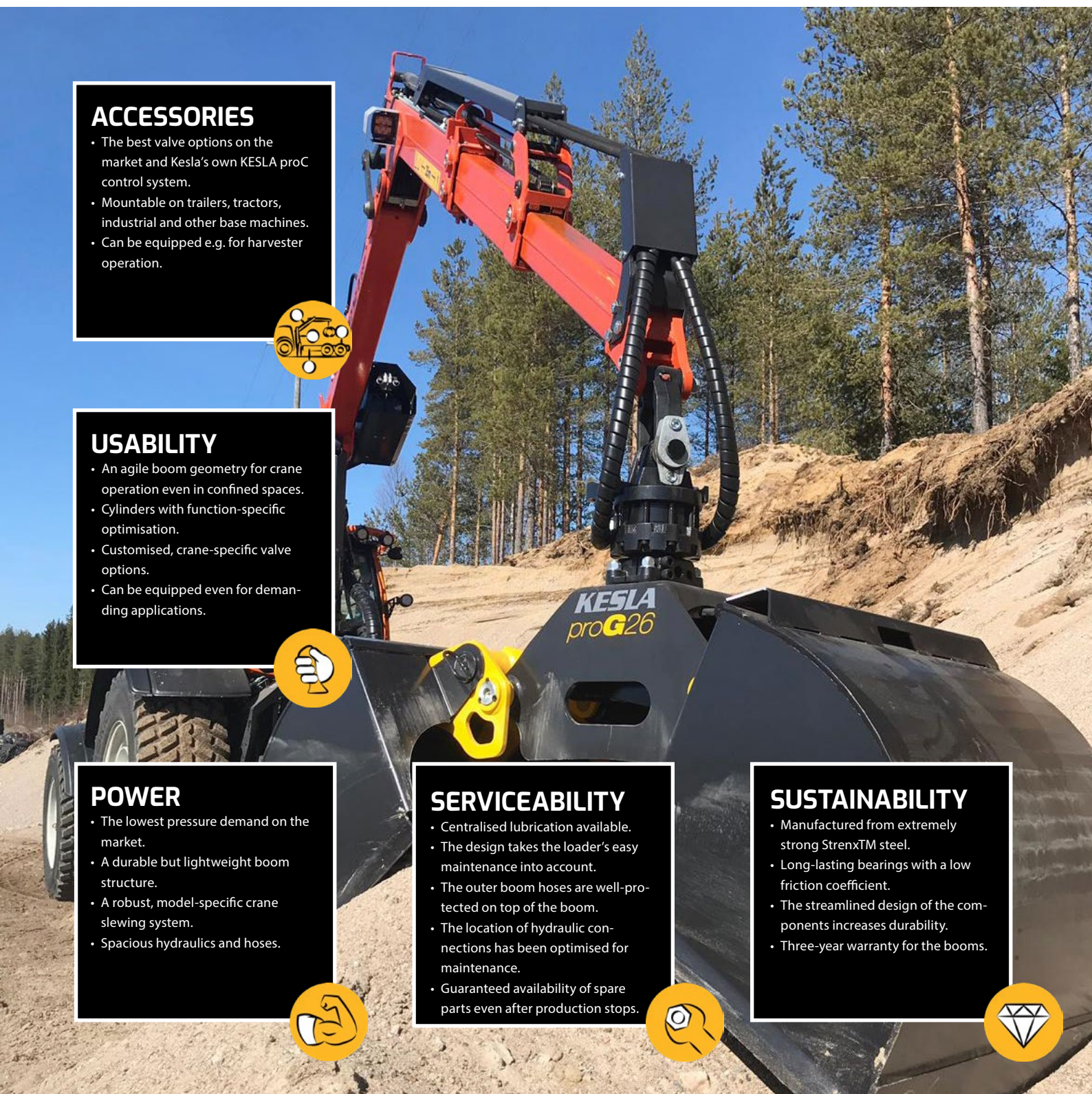
SERVICEABILITY

- Centralised lubrication available.
- The design takes the loader's easy maintenance into account.
- The outer boom hoses are well-protected on top of the boom.
- The location of hydraulic connections has been optimised for maintenance.
- Guaranteed availability of spare parts even after production stops.



SUSTAINABILITY

- Manufactured from extremely strong StrenxTM steel.
- Long-lasting bearings with a low friction coefficient.
- The streamlined design of the components increases durability.
- Three-year warranty for the booms.



ELECTRIC PILOT CONTROL

The electric pilot control ensures that the controls match your needs. You can adjust the loader's movement speed to your liking. The movements are always light and precise. The electric pilot control can be connected to the KESLA proC control system either upon order or later on.



HANDY WINCH

The winch can be used to drag logs closer even in challenging terrain. It has a reach of 40 metres and is available with a pulling power of 1,400 or 2,200 kg. Radio control increases safety.



TRACTOR HARVESTER

The KESLA 314/T and 305/T loaders can also be equipped for harvester operation. In the harvester equipment, additional hosing is installed on the boom and the valve is equipped for a harvester. The harvester head is controlled by the same operating valve as the loader.



The pictured products may include optional accessories. We reserve the right to make technical changes.

YOUR RESPONSIBLE PARTNER

READ ABOUT OUR OTHER PRODUCT GROUPS:

**City cranes – Truck and industrial cranes – Forest machine cranes – Harvester heads –
Chippers – Tractor loaders – Tractor forest trailers**