



KESLA 224  
LOADER



YOUR RESPONSIBLE  
PARTNER





# YOUR RESPONSIBLE PARTNER

Kesla is an expert in modern tractor equipment. With our decades of true hands-on experience in creating innovative solutions for tractors, we offer the best and most user-friendly tools for working anywhere from forests to farms and beyond. Without compromising responsibility.

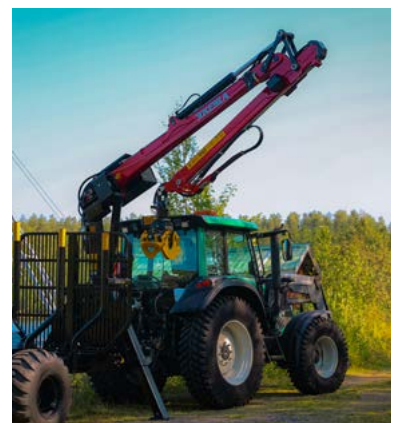
## KESLA 224

KESLA 224 is a single-extension loader with an outreach of 7 metres and 7% more lifting power compared to its predecessor. The redesigned loader boom system provides improved lifting geometry, especially for the close lifting features.

The loader's pressure demand is a mere 190 bar. The boom structure has been modified to reduce the consumption of oil per working cycle, while also providing a significantly more lifting power for the outer boom.

The hose system is overall neater than in the previous models. The slewing device base has been redesigned similar to the 320 series, ensuring the clearest possible visibility to the load space and excellent hose protection. The filter has been installed in the slewing device base to make its replacement significantly easier.

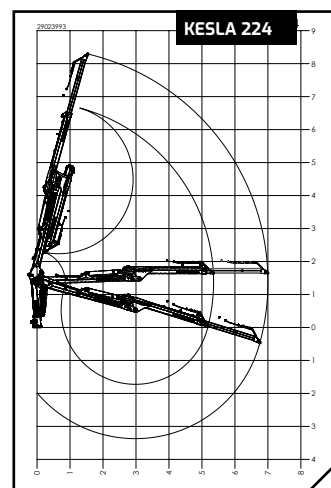
The loader is a versatile machine that is suitable for both local forest management and contract work thanks to its size.



TECHNICAL SPECIFICATIONS	224
Outreach	7.00 m
Boom extension	1.65 m
Lifting torque (gross)	45.3 kNm
Lifting capacity at 4 metres*	830 kg
Lifting capacity at maximum outreach*	425 kg
Recommended oil flow**, fixed/LS	35 l/min   80 l/min
Requisite pressure	190 bar
Weight***	570 kg
Trailer recommendation	KESLA 104 and 114 series

\* Lifting capacity without a grapple and rotator. The lifting capacity depends on the height and reach of the booms.

\*\* The recommended oil flow depends on the valve selection. \*\*\* Only the weight of the booms.



**More accessible filter  
for easier maintenance**

**Improved  
lifting geometry**

**Outreach 7.0 m**

**Higher  
lifting capacity  
at a pressure of 190 bar**

**Neater hose system.  
The hoses at the slewing  
device base are particularly  
well protected**

**Versatile  
installation options**





### **VERSATILE CONTROL OPTIONS**

There are multiple valve options for the loader: a mechanical, hydraulic or electrical valve. The control valve is located at the base of the lifting boom to ensure clear visibility.



### **GRAPPLE ACCESSORIES**

The accessories available for the KESLA proG20 grapple include gravel buckets and material grippers, which increase the versatility of the grapple. The grapple can also be equipped with the KESLA proG26E energy grapple.



### **KESLA 19GX**

The multi-function grapple is perfect for harvesting and loading energy wood. Thanks to the integrated TILT function, the tree does not fall until the operator decides it should. The blade of the felling head can be disabled when the grapple is needed for loading.

# **YOUR RESPONSIBLE PARTNER**

The pictured products may include optional accessories. We reserve the right to make technical changes.

### **READ ABOUT OUR OTHER PRODUCT GROUPS:**

**City cranes - Truck and stationary cranes - Forest machine cranes - Harvester heads  
- Chippers - Tractor loaders - Tractor forest trailers**