



KESLA 324  
LOADER



YOUR RESPONSIBLE  
PARTNER





# YOUR RESPONSIBLE PARTNER

Kesla is an expert in modern tractor equipment. With our decades of true hands-on experience in creating innovative solutions for tractors, we offer the best and most user-friendly tools for working anywhere from forests to farms and beyond. Without compromising responsibility.

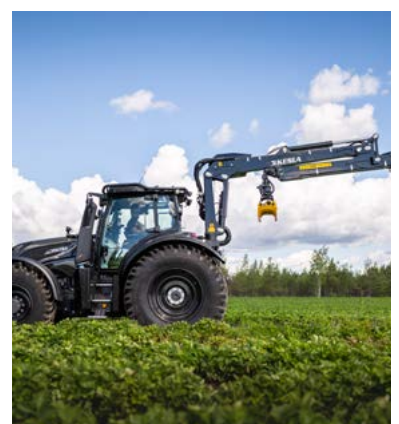
## KESLA 324

Kesla 324 is a single-extension loader with an extraordinary outreach of 7.35 metres. The loader has an unrivalled lifting capacity: the gross lifting torque of 81.6 kNm is achieved with a pressure of 190 bar. This strong single-extension crane has been designed with the needs of the Central European market in mind.

Sturdy and protective service platforms have been installed on top of the slewing device with an electrical switchboard and an access point for control valve hydraulics integrated next to them. Access to the control valve for maintenance is easier than before, as the valve cover opens like a bonnet.

The boom system's hoses are well protected, making the loader suitable for challenging working conditions. The replacement of hoses has been made easy and effortless. All the greasing points have two nipples, which makes greasing possible in any position.

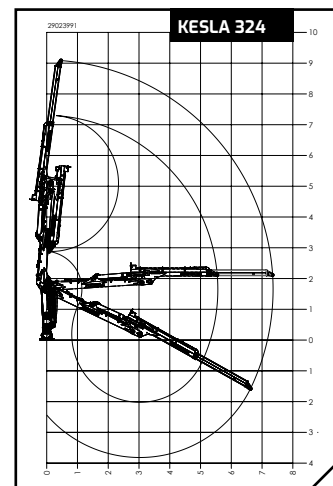
The boom geometry has been designed to meet the wishes of Central European customers. The compact loader fits small load spaces and is ideal for narrow thinning areas and cramped urban spaces.



TECHNICAL SPECIFICATIONS	324
Outreach	7.35 m
Boom extension	1.80 m
Lifting torque (gross, 4 m)	81.6 kNm
Lifting capacity at 4 metres*	1,445 kg
Lifting capacity at maximum outreach*	775 kg
Recommended oil flow** LS	>130 l/min
Requisite pressure	190 bar
Weight***	1,205 kg
Trailer recommendation	KESLA 114, 124 and 144 series

\* Lifting capacity without a grapple and rotator. The lifting capacity depends on the height and reach of the booms.

\*\* The recommended oil flow depends on the valve selection. \*\*\* Only the weight of the booms.



**Fantastic boom geometry**

**Well-protected hoses and easy replacement**

**Outreach 7.35 m**

**A lifting torque of 81.6 kNm at a pressure of 190 bar**

**Easy maintenance**

**Works well even in tight spaces**





### **VERSATILE CONTROL OPTIONS**

The loader can be equipped with a mechanical or electric control valve. The electric valve can be installed to the boom base or the slewing device.



### **CONVENIENT WINCH**

The winch can be used to drag logs closer, even in challenging terrain. It has a reach of 40 metres and is available with a tractive force of 1,400 kg. Radio operation increases safety.



### **KESLA 19GX**

The multi-function grapple is perfect for harvesting and loading energy wood. Thanks to the integrated TILT function, the tree does not fall until the operator decides it should. The blade of the felling head can be disabled when the grapple is needed for loading.

# **YOUR RESPONSIBLE PARTNER**

## **READ ABOUT OUR OTHER PRODUCT GROUPS:**

**City cranes - Truck and stationary cranes - Forest machine cranes - Harvester heads  
- Chippers - Tractor loaders - Tractor forest trailers**